

2.4 GHz 15 dBi Directional Yagi Antenna

with 1 RPTNC Male Connector

ventev®

Connect, Protect, and Enable™

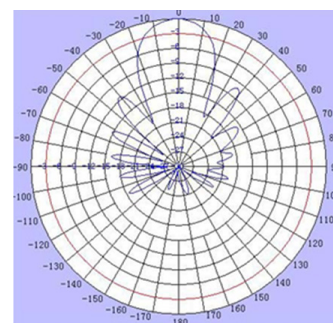
Ventev's 2.4 GHz yagi antenna is a rugged, high performance directional antenna to be used as a bridge antenna between two networks or for point-to-point communications. The antenna provides 15 dBi of gain and a very symmetrical pattern characteristic. It may be installed in either vertical or horizontal polarization. Includes an RPTNC male with a 36" pigtail and a mast mount.

Specifications

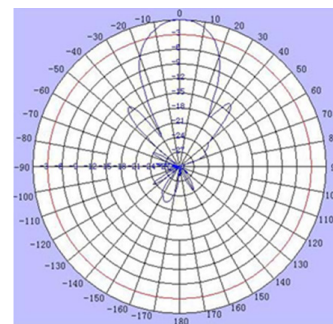
SKU	457948
Manufacturer Part Number	T24150Y13602
Operating Frequency Range	2.4 GHz
Gain	15 dBi
Polarization	Vertical or Horizontal
Vertical Beamwidth	29°
Horizontal Beamwidth	29°
VSWR	≤ 2.5
Nominal Impedance	50 Ohms
Max Input Power	100 W
Number of Ports	1
Length of Lead	36 in
RF Connector	RPTNC Male
Application	Outdoor
Operating Temperature	-22° to 158°F
Dimensions	23.6 x 2 x 2 in
Weight	2.6 lbs.
Max Wind Velocity	135 mph
Bandwidth	83 MHz
Front to Back Ratio	≥ 18 dB



Radiation Patterns



E-Plane Pattern



H-Plane Pattern

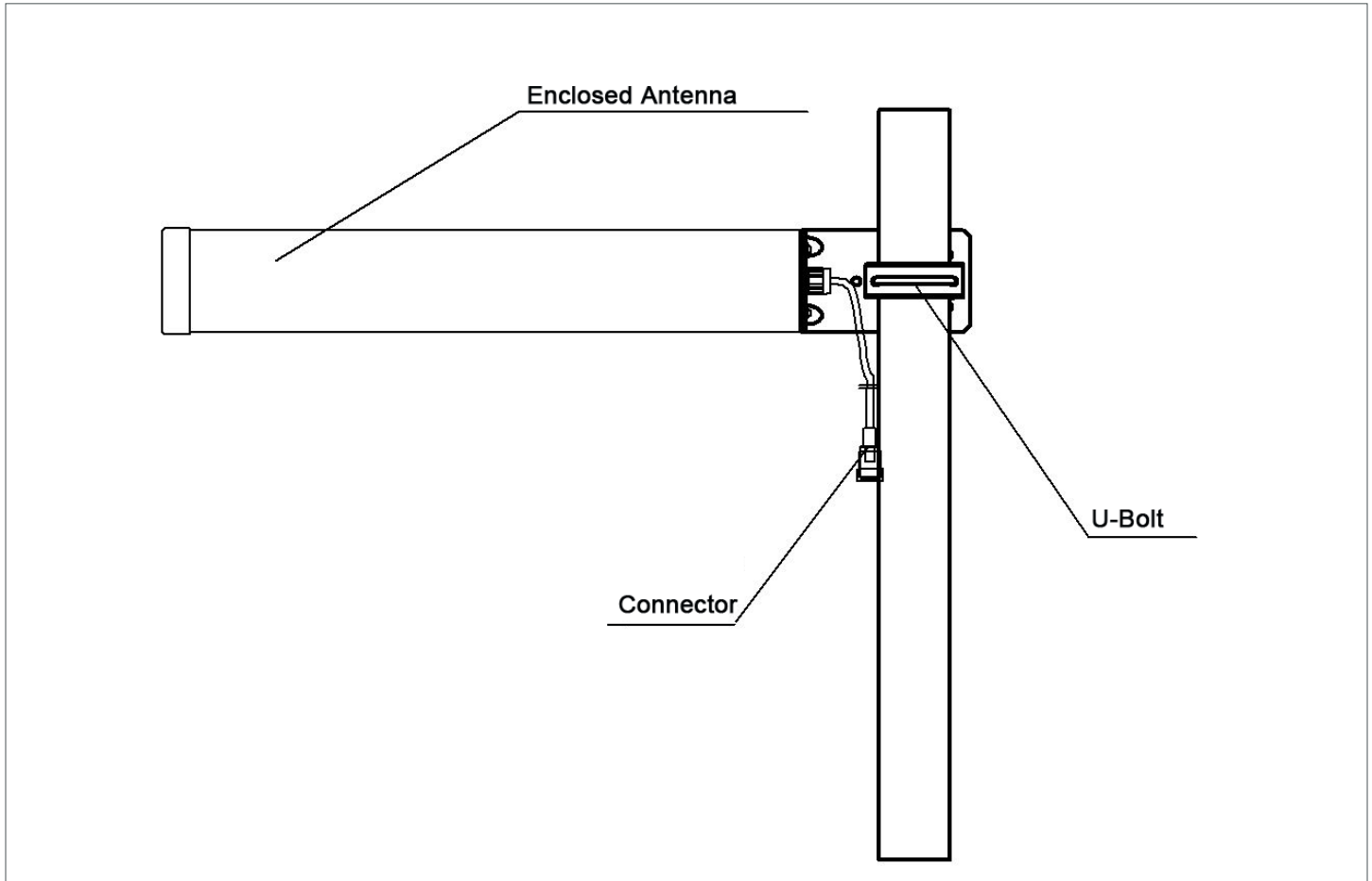


All product specifications are subject to change without notice or obligation.

2.4 GHz 15 dBi Directional Yagi Antenna

with 1 RPTNC Male Connector

Mount Information



Installation Instructions

- The antenna is in vertical polarization mode by default.
- For horizontal polarization installation, unscrew the antenna from the L-bracket and rotate 90 degrees. Screw the antenna back to the L-bracket. Be certain that the polarization arrow is parallel to ground when installed.
- Mount the antenna to the mast with U-bolt and hex nuts.
- Adjust the antenna angle until the signal reception is optimized.
- Fasten all screws and seal the connector with weatherproof tape.

Note: Mast mount diameter: ≤ 2 "



All product specifications are subject to change without notice or obligation.