

The image is a vertical composition. The background is a city skyline at night, with numerous skyscrapers and windows illuminated with warm yellow and orange lights. In the foreground, there are several semi-transparent silhouettes of business professionals. On the left, a man in a suit is seen from the back, looking towards the city. In the center, another man in a suit is seen from the side, also looking towards the city. On the right, a woman in a business suit is seen from the side, looking towards the city. The overall color palette is dominated by the warm tones of the city lights and the cool blues of the sky and building reflections.

ventev

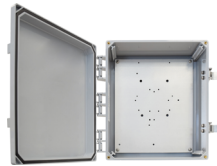
PRODUCTS & SOLUTIONS FOR

DART Configurations



Ventev DART Configurations

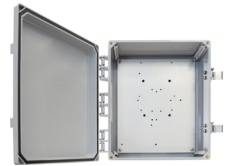
Ventev's DART offerings will help you power, protect, and connect your Cisco access points!



14x12x6" NEMA Enclosure with Solid Door, Key Lock, 4 RPTNC Bulkhead Holes & 4-pin DART Connector Pass-Thru

SKU 294122

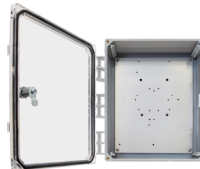
MFG Part #: CD14126SK-DBH



14x12x6" NEMA Enclosure with Solid Door, Latch Locks, with 4 RPTNC Bulkhead Holes & 4-pin DART Connector Pass-Thru

SKU 228182

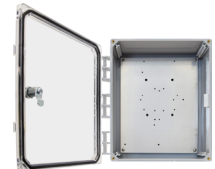
MFG Part #: CD14126SL-DBH



14x12x6" NEMA Enclosure with Clear Door, Key Lock, 4 RPTNC Bulkhead Holes & 4-pin DART Connector Pass-Thru

SKU 286328

MFG Part #: CD14126CK-DBH



14x12x6" NEMA Enclosure with Clear Door, Latch Locks with 4 RPTNC Bulkhead Holes & 4-pin DART Connector Pass-Thru

SKU 267128

MFG Part #: CD14126CL-DBH

CISCO 3802E
& 9120AXE

Cables



2 ft LMR100 Jumper with
4-Lead RPTNC Female BH
to RA DART Connector

SKU 214924

MFG Part #: AIRCAB002DARTRRB



2 ft 100 Series Cable
Assembly with 4-Lead RPTNC
Female - DART Connector

SKU 281970

MFG Part #: AIR-CAB002-DARTR



3ft. LMR100 Jumper with
4-Lead N Male to

SKU 285040

MFG Part #: AIRCAB002DARTN

CISCO 3802E
& 9120AXE

Antennas



2.4/5 GHz 6 dBi Wi-Fi
Directional Antenna with 4 Port
DART Connector

SKU 273519

MFG Part #: M6060060P1D43699D



2.4/5 GHz 6 dBi Wi-Fi
Directional Antenna with 4 Port
DART Connector

SKU 282751

MFG Part #: M6060060D3D43699



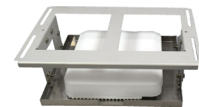
2.4/5 GHz 6 dBi Wi-Fi Omni
Antenna with 4 Port
DART Connector

SKU 279689

MFG Part #: TYQM-24065806D401

CISCO 3802E
& 9120AXE

Co-Locating Mounts



Wi-Fi Co-Locating Mount
for Cisco 3802e APs,
Two-Antenna

SKU 298415

MFG Part #: TW-BKT-2ANT



Wi-Fi Co-Locating Mount
with Two 18" Strong
Arm Mounts

SKU 232001

MFG Part #: TW-KIT-TACLSAM2



Wi-Fi Co-Locating Mount
with Two 10" Strong
Arm Mounts

SKU 252983

MFG Part #: TW-KIT-TACLSAM1

CISCO 9130AXE

Enclosures with Integrated Antennas



14x12x6" NEMA 4X Enclosure with Solid Door and Integrated Directional Antenna

SKU 220860

MFG Part #: CD14126SL-D9130



14x12x6" NEMA 4X Enclosure with Clear Door and Integrated Directional Antenna

SKU 266582

MFG Part #: CD14126CL-D9130



14x12x6" NEMA 4x Enclosure with Solid Door and Integrated Omni Antenna

SKU 223011

MFG Part #: CD14126SL-O9130



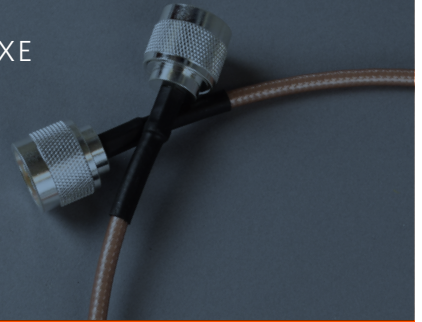
14x12x6" NEMA 4X Enclosure with Clear Door and Integrated Omni Antenna

SKU 209010

MFG Part #: CD14126CL-O9130

CISCO 9130AXE

Cables



3 ft 100 Series Cable Assembly with 8 Lead N Male - DART Connectors

SKU 246082

MFG Part #: AIR-CAB003-D8-N=P



2 ft LMR100 Jumper with 8-Lead RPTNC Female BH to DART Connector

SKU 247990

MFG Part #: AIRCAB002D8RBH



2 ft 100 Series Cable Assembly with 8 Lead RPTNC Female to DART Connector

SKU 202840

MFG Part #: AIR-CAB002-D8-R=



3 ft 8 Port Dart Male to DART Female Extension Cable

SKU 247573

MFG Part #: RDARTM8-3FT-DARTF



2 ft LMR100 Jumper with 8-Lead RPTNC F BH to RA DART Connectors

SKU 259642

MFG Part #: AIR-CAB002-D8-RRB



6 ft 8 Port Dart Male to DART Female Extension Cable

SKU 203261

MFG Part #: RDARTM8-6FT-DARTF

CISCO 9130AXE

Antennas



2.4/5 GHz 2/3 dBi Wi-Fi Omnidirectional Antenna with 8 Port DART Connector

SKU 227468

MFG Part #: M6040040MO1D83699



2.4/5 GHz 6 dBi Wi-Fi Omnidirectional Antenna with 8 Port Right Angle DART Connector

SKU 249891

MFG Part #: M6060060MO1D83699



2.4/5 GHz 6 dBi Wi-Fi Directional Antenna with 8 Port Right Angle DART Connector

SKU 229080

MFG Part #: M6060060D1D83699

CISCO 9130AXE

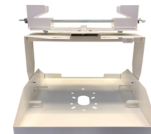
Co-Locating Mounts



Single-Axis Universal Co-Locating Mount

SKU 229741

MFG Part #: TW-COLOMOUNT-MULT



Single-Axis Universal Co-Locating Mount

SKU 235131

MFG Part #: TW-IBCOLOMNT-MULT



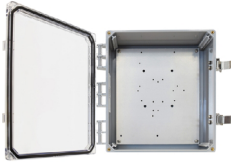
Multi-Connector Co-Location Mount for Cisco and T-Bar Mounted Access Points

SKU 291174

MFG Part #: TW-COLOMNT-W

CISCO 9130AXE

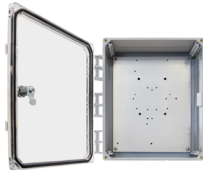
Enclosures



14x12x6" Enclosure with Clear Door, Latch Locks, and 8 RPTNC Bulkhead Holes

SKU 240346

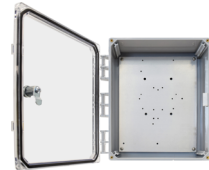
MFG Part #: CD14126CL-8.5



14x12x6" NEMA Enclosure with Clear Door, Key Lock and an 8-Pin DART Connector Pass-Through

SKU 271370

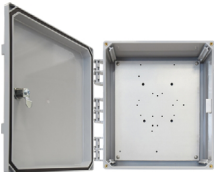
MFG Part #: CD14126CK-DSP



14x12x6" Enclosure with Clear Door, Key Lock, and 8 RPTNC Bulkhead Holes

SKU 242821

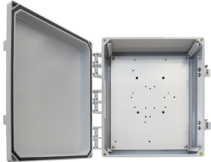
MFG Part #: CD14126CK-8.5



14x12x6" NEMA Enclosure with Solid Door, Key Lock and 8 RPTNC Bulkhead Holes

SKU 230078

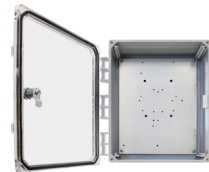
MFG Part #: CD14126SK-8.5



14x12x6" NEMA Enclosure with Solid Door, Latch Locks and 8 RPTNC Bulkhead Holes

SKU 214823

MFG Part #: CD14126SL-8.5



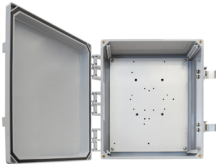
12x10x6" NEMA Enclosure with Clear Door, Key Lock, and 8 RPTNC Bulkhead Holes

SKU 237308

MFG Part #: CD12106CK-8.5

CISCO 9130AXE

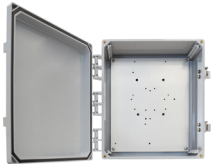
Enclosures



14x12x6" NEMA Enclosure with Solid Door, Latch Locks with an 8-Pin DART Connector Pass-Through

SKU 227382

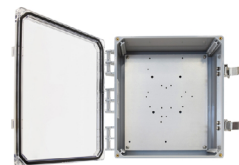
MFG Part #: CD14126SL-DSP



14x12x6" NEMA Enclosure with Solid Door, Key Lock and an 8-Pin DART Connector Pass-Through

SKU 212765

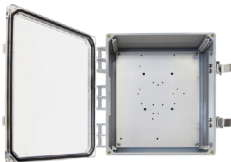
MFG Part #: CD14126SK-DSP



14x12x6" NEMA Enclosure with Clear Door, Latch Locks and an 8-Pin DART Connector Pass-Through

SKU 267029

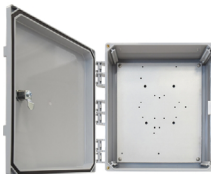
MFG Part #: CD14126CL-DSP



12x10x6" NEMA Enclosure with Clear Door, Latch Locks, and 8 RPTNC Bulkhead Holes

SKU 247780

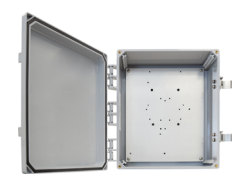
MFG Part #: CD12106CL-8.5



12x10x6" NEMA Enclosure with Solid Door, Key Lock, and 8 RPTNC Bulkhead Holes

SKU 240462

MFG Part #: CD12106SK-8.5

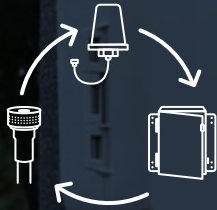


12x10x6" NEMA Enclosure with Solid Door, Latch Locks, and 8 RPTNC Bulkhead Holes

SKU 288718

MFG Part #: CD12106SL-8.5

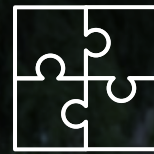
WHY CHOOSE **ventev**[®]



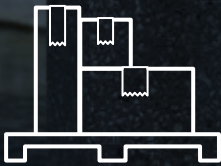
Industry-leading product lines that provide a comprehensive ecosystem of wireless products



Products for every major radio/AP covering Wi-Fi, DAS, CBRS, LTE, SCADA, & two-way



Easy-to-install & Pre-configured, fully integrated solutions



Large inventory of products, ready to ship



Professional product training & educational materials



Customer support with exceptional product and industry knowledge

After you choose the radio



choose **ventev**[®]

For more information

visit ventevinfra.com,
call 800-851-4965,
or email sales@ventev.com