



Innovations

BTRM200

Battery Test Remote Monitor

User Guide

Contact :

VenteV Innovations
10999 McCormick Road
Hunt Valley, MD 21031
Phone Number 800.759.9996

Email

Info@ventev.com

Contents

1. Warnings.....	4
2. Supplied Accessories	4
3. Overview	4
4. System Description	5
4.1. Overall System Connection Diagram.....	5
4.2. System Connector Overview	5
5. Basic setup	6
5.1. Connecting unit to a PC.....	6
5.2. Initial Power up to set IP address.....	6
5.3. Accessing your host computer’s network settings	7
5.4. Setting IP address information for BTRM default	8
5.5. Verify IP address information.....	8
6. Unit Deployment	13
6.1. Mounting	13
6.2. Wiring Battery Connection	13
6.3. Wiring Power Supply Connections	13
6.4. Wiring battery Charger Connections.....	13
6.5. Alarm Connections	13
6.6. Clearing Battery Test Data	13
7. Web Interface Menus	13
7.1. System Status Page	14
7.2. Battery Status Page	17
7.3. Battery Test Page	18
7.3.1. Manual Test.....	19
7.3.2. Capacity IO Check.....	19
7.3.3. Reset Battery Data and Setting to Defaults	19
7.4. Port Options Page	19
7.5. Email Configuration Page	22
7.6. Email Test Page	24
7.7. Network Configuration Page.....	24
7.8. DNP3 and Modbus	26
7.8.1. Addressing.....	26
7.8.2. DNP Retry Settings	26
7.8.3. Communications Interface	27
7.8.3.1. TCP/IP	27
7.8.3.2. RS232	27
7.9. SNMP Configuration Page.....	27

7.11.	Help Page.....	30
7.12.	About.....	31
8.	SNMP Functionality	31
8.2.	SNMP Monitoring through a MIB Browser	32
8.2.1.	Install MIB Browser.....	32
8.2.2.	Install SNMP MIB File.....	32
8.2.3.	View BTRM via MIB Browser	33
8.2.4.	Configure Trap Receiver	35
8.2.5.	Cannot Bind to Port 162 Error Message	37
8.2.6.	Open Trap Receiver	40
8.3.	Further Reading	44
9.	Additional Protocols	44
9.1.	DNP3	44
9.1.1.	Overview	44
9.1.2.	Data Link Layer	44
9.1.3.	Application Layer.....	44
9.1.3.1.	Function Support	44
9.1.3.1.1.	Enable Disable Unsolicited Event Status.....	45
9.1.3.2.	Groups and Variations	45
9.1.3.3.	Qualifiers.....	45
9.1.3.4.	Binary Input Status Points	45
9.1.3.5.	Analog Input Status Points	46
9.1.3.6.	Analog Output Status Points	46
9.1.3.7.	Binary Output Status Point	47
9.1.3.8.	Binary Output Write to Points.....	47
9.1.3.9.	Events	48
9.1.3.10.	48
9.2.	Mod Bus	48
10.	Additional Network Setup	49
10.1.	IP Reset	49
10.2.	Router Ports.....	49
10.3.	Port Table.....	50
11.	Specifications and Warranty.....	50

1. Warnings

Alarm Connections 1 and 2 rated for 60 Vdc, 80 ma max load. Do not exceed these ratings. Do not connect to AC line powered loads.

2. Supplied Accessories

BTRM200 Monitor
3ft Ethernet Cable

3. Overview

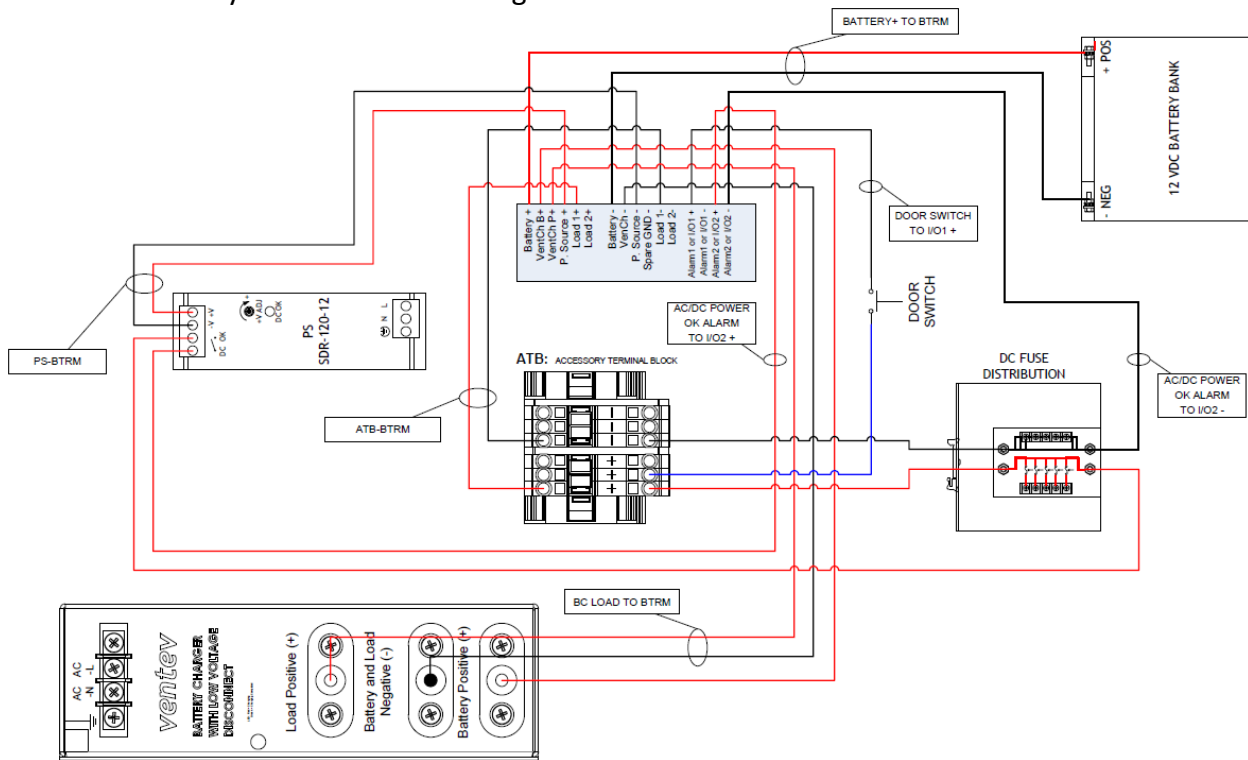
Batteries age and their capacity slowly deteriorate until they need replacement. Also, batteries can suddenly develop an internal fault that again limits their capacity. In an AC Line Down situation, where batteries are used in critical back-up applications, these conditions will result in premature, or in some cases immediate, system shutdown.

Although a battery's state of charge can be inferred by monitoring the battery terminal voltage while in standby mode, this voltage will not give an indication of actual capacity. Furthermore, a battery that is marginal may not be detected until it is called upon to perform, at which point it is too late to prevent a system failure. For a battery connected to a charger that maintains a float voltage, neither condition can be checked.

In these cases, the BTRM200 is designed to evaluate battery capacity transparently to system operation and provide network based notification should a battery fail or its capacity drop below a specified level. This also has the advantage of allowing batteries that exceed their nominal lifetime to remain in service, provided they meet capacity requirements.

4. System Description

4.1. Overall System Connection Diagram



4.2. System Connector Overview

4.2.1. Power Supply In Power Jack (P. Source +/- and VenCh P+)

The BTRM must be connected to the load power supply in order to energize the load while the battery charger is charging the battery.

4.2.2. Battery Charger In Power Jack (VenCh B+/-)

The BTRM must be connected to the battery charger in order to charge the battery bank after the battery capacity test is performed.

4.2.3. Battery In Power Jack (Battery +/-)

The battery bank must be connected directly to the BTRM in order to perform the battery capacity test.

4.2.4. Alarm Connector (Alarm1 or I/O1, Alarm2 or I/O2)

BTRM has two independent, isolated relay contacts for alarm indication.

Contacts are normally open when power is off. The user can select normally open or normally closed under an alarm condition. Do not exceed the contact

maximum relay ratings of 60 Volts, 80 ma. Do not use to directly operate AC line connected equipment.

5. Basic setup

5.1. Connecting unit to a PC

Notes on accessing a BTRM over Ethernet:

Technically you should be able to plug the device into your current network, regardless of how your current network IP addressing is set up, and be able to reach the BTRM's Status and Setup web page by entering its IP address (found on the BTRM front label) in a Web Browser on a local computer. However, in practice, not so easy, due to a wide variety of possibly incompatible network addressing and firewall configurations. These difficulties occur most often if someone else has set up the network settings, and in particular where these settings are "managed" by software installed on your computer by your internet provider or corporate IT departments.

To avoid these potential network issues at the initial evaluation stage it is best to connect both your computer and the device to a hub/network switch (one that is not connected to the rest of your network) or directly connect your computer to the BTRM with a cross-connected Ethernet cable.

5.2. Initial Power up to set IP address

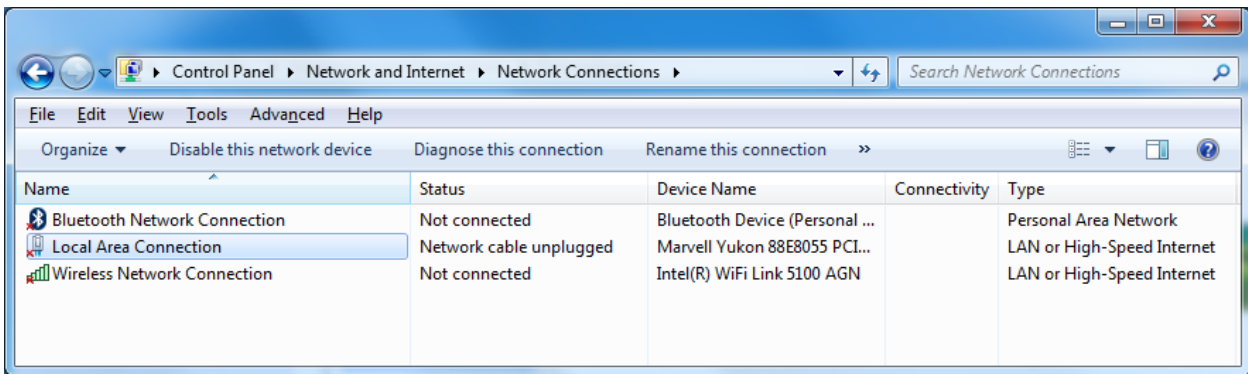
To power up the device, connect the battery to the BTRM. Power up the power supply and battery charger. The BTRM starts in self-test mode for 5 to 15 seconds. PB1 and PB2 push button LEDs will blink.

Once the device is power up and cabled to the Ethernet, the GREEN LED will illuminate on the Ethernet connector and startup should be complete within 30 sec.

5.3. Accessing your host computer's network settings

From the start button select Control Panel -> Network and Internet -> Network Connections

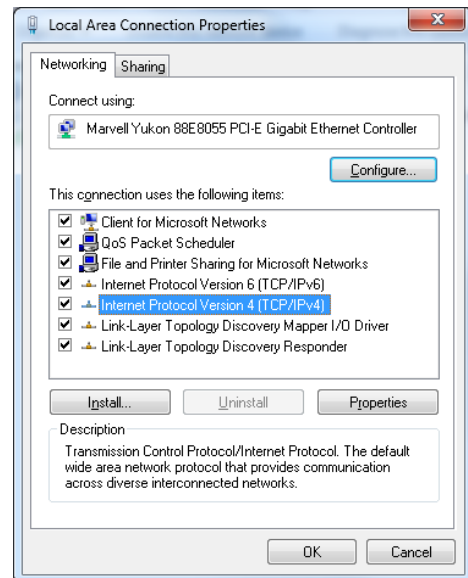
Select the adapter that you plan to use and from the File menu, select properties.



This will bring up the properties window, shown on the right.

Scroll down to the Internet Protocol Version 4 (IPv4) item, select it, and then select "properties".

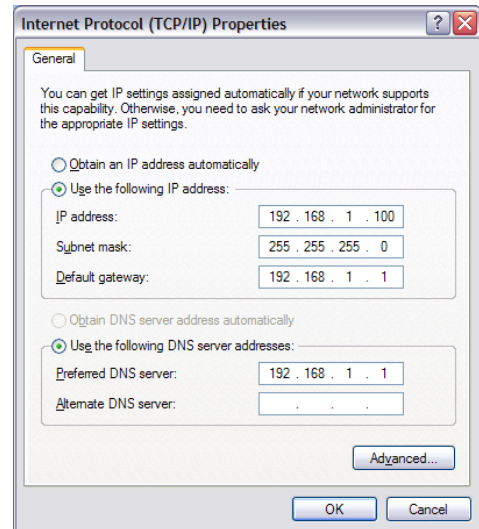
This will bring up the window to allow manual configuration of the network adapter's IP addresses.



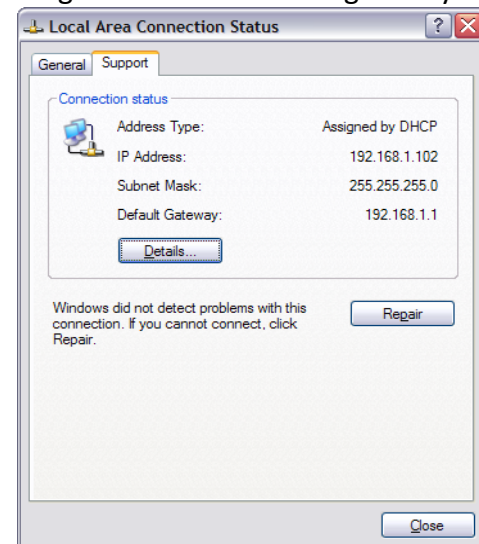
5.4. Setting IP address information for BTRM default

Using a direct connection to the device with a cross connected cable or using a network switch (hub), use the manual IP settings shown on the right. This property dialog can be found in the TCP/IP properties, which is a sub dialog of the Network Connections Properties, both found in Control Panel Network Connections.

(Typically the default gateway and DNS server need not be entered.)



If using a router, check your local area connection settings to see if the router gateway address is the same as the default device gateway of 192.168.1.1. If it's not, you will need to use a direct connection as described above to change the device gateway address to match the router's gateway address.



5.5. Verify IP address information

For the initial configuration of the BTRM and to change Network IP settings for placement in an IP based network you will need to connect the BTRM directly to your PC. Once connected to your PC you will be able to configure the BTRM to match your network settings.

You will need the following information from your network administrator to add the BTRM to your IP Network:

- IP Address – we recommend using a static IP address for the BTRM
- Gateway – what is the IP address of the Gateway of your network
- Subnet Mask – what is the mask of your network
- Primary DNS – IP address of the primary DNS server for your network

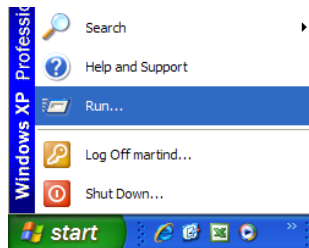
Once you have your connection made to you laptop or PC you will need to record your IP address and verify connection to the BTRM.

NOTE: It may be necessary to give your PC or Laptop a static address to access the BTRM default network.

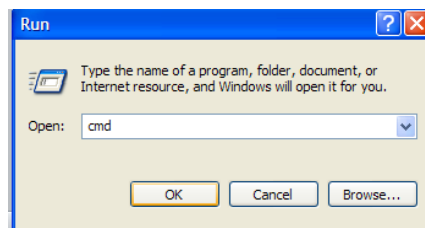
Example: IP Address: 192.168.1.200
 Subnet mask: 255.255.255.0

Use the following screen shots to guide you into finding your IP address and record your address for use later.

1. Click Start and then Run.



2. In the window type cmd and click OK.



3. Type ipconfig then <Enter>.

```
C:\WINDOWS\system32\cmd.exe
Microsoft Windows XP [Version 5.1.2600]
(C) Copyright 1985-2001 Microsoft Corp.
C:\Documents and Settings\MartinD\Desktop>ipconfig_
```

4. Record your IP Address

```
C:\WINDOWS\system32\cmd.exe
Microsoft Windows XP [Version 5.1.2600]
(C) Copyright 1985-2001 Microsoft Corp.
C:\Documents and Settings\MartinD\Desktop>ipconfig
Windows IP Configuration

Ethernet adapter Wireless Network Connection:

    Media State . . . . . : Media disconnected

Ethernet adapter Local Area Connection:

    Connection-specific DNS Suffix . : ESR9855G
    IP Address. . . . . : 192.168.1.199
    Subnet Mask . . . . . : 255.255.255.0
    Default Gateway . . . . . : 192.168.1.1
C:\Documents and Settings\MartinD\Desktop>_
```



5. Verify connectivity to the BTRM by sending a Ping command to the BTRM's default IP address: PING 192.168.1.214 <Enter> you should receive four REPLY messages from the BTRM.

```
C:\WINDOWS\system32\cmd.exe

Media State . . . . . : Media disconnected
Ethernet adapter Local Area Connection:

Connection-specific DNS Suffix . : ESR9855G
IP Address . . . . . : 192.168.1.199
Subnet Mask . . . . . : 255.255.255.0
Default Gateway . . . . . : 192.168.1.1

C:\Documents and Settings\MartinD\Desktop>ping 192.168.1.214

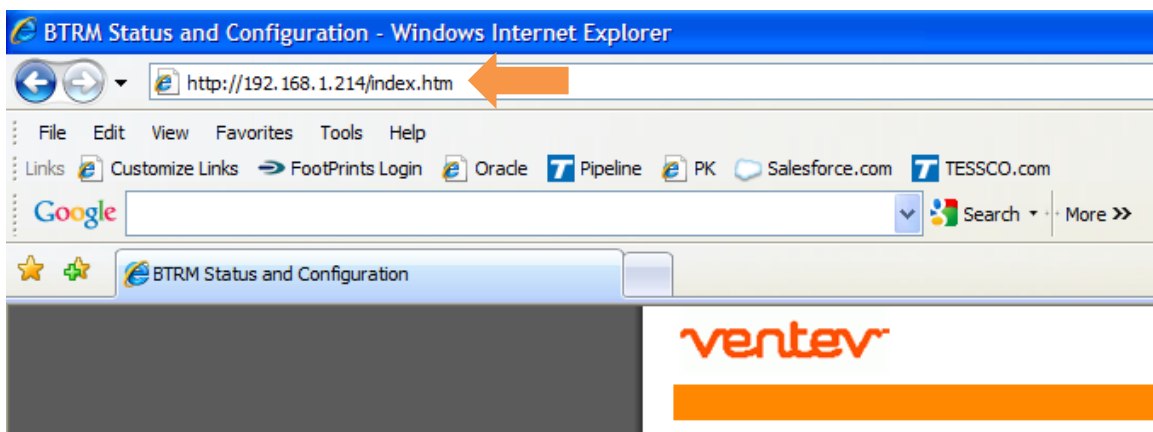
Pinging 192.168.1.214 with 32 bytes of data:

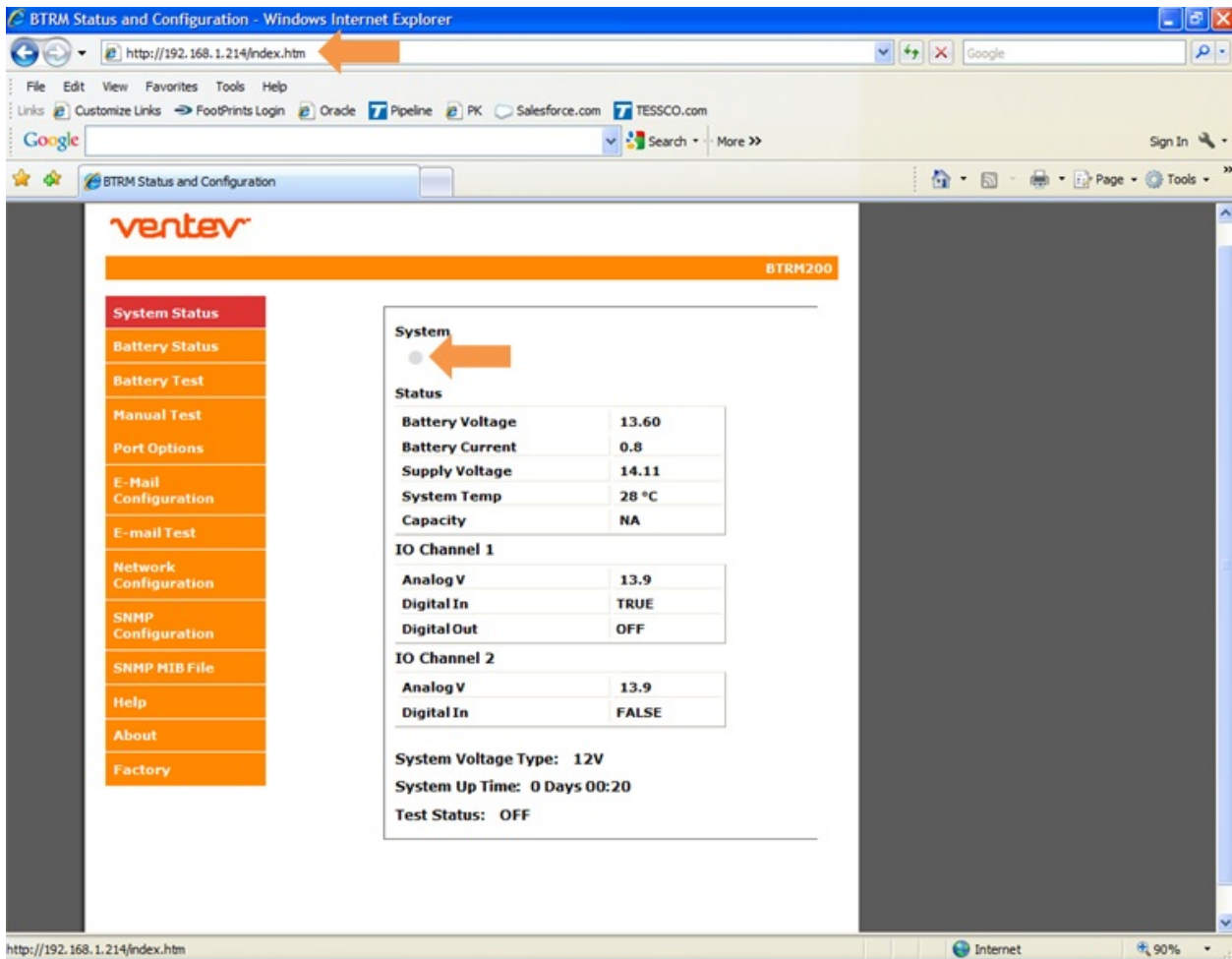
Reply from 192.168.1.214: bytes=32 time=1ms TTL=100
Reply from 192.168.1.214: bytes=32 time<1ms TTL=100
Reply from 192.168.1.214: bytes=32 time<1ms TTL=100
Reply from 192.168.1.214: bytes=32 time<1ms TTL=100

Ping statistics for 192.168.1.214:
    Packets: Sent = 4, Received = 4, Lost = 0 (0% loss),
    Approximate round trip times in milli-seconds:
        Minimum = 0ms, Maximum = 1ms, Average = 0ms

C:\Documents and Settings\MartinD\Desktop>
```

6. Open a New Web Browser Session (Internet Explorer, Firefox or Google Chrome) and type in the address of the BTRM (default is 192.168.1.214) and click go or <enter>. If everything is set up correctly you should see the System Status of the BTRM. **Note:** The Status light blinks when the BTRM is active.





6. Unit Deployment

6.1. Mounting

The BTRM needs to be mounted in a water-proof location. Typically in a cabinet with access to DC power. Use the DIN rail clip on the BTRM to secure to the DIN rail on the enclosure back plate wall.

6.2. Wiring Battery Connection

Connect the battery connectors from the BTRM to the battery bank per system configuration diagram **.

6.3. Wiring Power Supply Connections

Connect the BTRM power supply connections to the load power supply per system configuration diagram **.

6.4. Wiring battery Charger Connections

Connect the BTRM battery charger connections to the battery charger per system configuration diagram **.

** see section 4.0 for system connection diagram

6.5. Alarm Connections

Alarm connections are sets of normally open / closed contacts. These contacts are isolated from the BTRM power source, and do not provide power. They can be used to alert the Network Operations Center by connecting the alarms to your systems existing alarm signaling pairs. Alternatively, the alarm contacts can be used to operate external DC relays that then can be used to control alarm lights or audible alerts. Provided that the contact ratings (60V, 80 ma) are not exceeded.

6.6. Clearing Battery Test Data

To clear test data from the BTRM memory, press and hold button PB2 for 15 seconds until the LEDs flash.

7. Web Interface Menus

The BTRM will need to be configured to match your network settings as well as your email and SNMP notification if those features are to be used. See section 5 for IP addressing setup. The default Web page address of the BTRM is 192.168.1.214. Once the BTRM is connected, enter this number into your web browser.

The Screenshots included with each sub heading will explain the different menus of the BTRM user interface. This interface allows you to remotely configure and change settings across the network.

7.1. System Status Page

This screen displays an overview of the status on the BTRM. You can quickly see any alarms occur by watching this screen.

System Status

BTRM200

System	
●	
Status	
Battery Voltage	13.71
Battery Current	0.0
Supply Voltage	13.62
System Temp	27 °C
Capacity	NA
IO Channel 1	
Analog V	0.0
Digital In	OFF
Digital Out	OFF
IO Channel 2	
Analog V	0.0
Digital In	OFF

System Up Time: 2 Days 09:04

Test Status: OFF

Low Voltage Shutdown: Disabled

7.1.1. System Status Indicator

If the web browser has a connection to the unit, the system indicator will toggle between grey and green once a second.

7.1.2. Battery Voltage

This is the measurement of the battery voltage.

7.1.3. Battery Current

This is the measurement of the battery current.

Negative battery current Battery is powering the load.

Positive battery current Battery is being charger by battery charger.

7.1.4. Supply Voltage

This is the measurement of power supply voltage.

7.1.5. System Temperature

This is the measurement of the enclosure temperature.

7.1.6. Capacity

This is the measurement of the battery's capacity level. This reading is present after the first test is completed.

7.1.7. IO Channel 1 – Analog V

This is the measurement of the voltage present across contact number 1.

7.1.8. IO Channel 1 – Digital In

This is the logic setting for IO Channel 1 (see port options menu).

TRUE The logic level voltage for the port has been met. An alarm message has been sent.

FALSE The logic level voltage for the port has not been met. No alarm message has been sent.

7.1.9. IO Channel 1 – Digital Out

This indicates that the IO Channel 1 relay has been set to indicate a battery relate fault (see port options menu).

OFF The relay is set for normal operation.

ON The relay is set to indicate a battery fault as diagnosed by the BTRM.

7.1.10. IO Channel 2 – Analog V

This is the measurement of the voltage present across contact number 2.

7.1.11. IO Channel 2 – Digital In

This is the logic setting for IO Channel 2 (see port options menu).

TRUE The logic level voltage for the port has been met. An alarm message has been sent.

FALSE The logic level voltage for the port has not been met. No alarm message has been sent.

7.1.12. System Voltage Type

Record of the voltage the system is operating at.

7.1.13. System Up Time

Record of the time the system has been operational.

7.1.14. Test Status

This indicates if the battery capacity test has been enabled.

7.2. Battery Status Page



BTRM200

System Status	<h3>Capacity Test Settings Results</h3>
Battery Status	<div style="border: 1px dashed gray; padding: 10px;"> <p>Tested at System Time (DDDD HH:MM): <input style="width: 100%;" type="text" value="0000 05:57"/></p> <p>At Average load in milliamps: <input style="width: 100%;" type="text" value="7000"/></p> <p>At Temperature: <input style="width: 100%;" type="text" value="28"/> °C</p> </div>
Battery Test	<h3>Current Status</h3>
Manual Test	<div style="border: 1px dashed gray; padding: 10px;"> <p>Est Runtime HHHH:MM to 11.00 V or 22.00 V <input style="width: 100%;" type="text" value="0020:31"/></p> <p>Minumum Runtime HHHH:MM <input style="width: 50px;" type="text" value="20"/> Hours <input style="width: 50px;" type="text" value="30"/> Min</p> <p><input style="width: 100%;" type="text" value="Good"/></p> </div>
Port Options	
E-Mail Configuration	
E-mail Test	
Network Configuration	
DNP3 Modbus Configuration	
SNMP Configuration	
SNMP MIB File	
Help	
About	

7.2.1. Capacity Test Settings Results.

This field displays the time stamp for the last battery capacity test was performed, the average load current, and the average enclosure temperature the test was performed at.

7.2.2. Current Status.

This field displays the estimated time to perform the battery capacity test. The test is terminated when the battery voltage goes below 11 Vdc for a 12 Vdc system or 22 Vdc for a 24 Vdc system. This is based on the battery capacity curves for lead acid batteries and the average load current of the system. The field also displays the minimum run time for the battery capacity test and the status of the last test performed.

7.3. Battery Test Page

This page is used to enable the battery capacity test and customize the test. The user can set the time between the tests and the length of the capacity test is performed.



BTRM200

- System Status
- Battery Status
- Battery Test
- Manual Test
- Port Options
- E-Mail Configuration
- E-mail Test
- Network Configuration
- DNP3 Modbus Configuration
- SNMP Configuration
- SNMP MIB File
- Help
- About

Capacity Test Settings

Enable Capacity Test

Test Schedule

Hours

Time to Next

Hours

Minumum Runtime (HH:MM):

Hours Min

Manual Test Page

7.3.1. Manual Test

This allows the user to manually start the battery capacity test at their discretion.



BTRM200

System Status

Manual Test

Battery Voltage must be greater than:
 12.40 V for 12V systems
 24.80 V for 24V systems

Manual Start Hours Delay

Capacity IO Check

Reset Battery Data and Settings to Defaults

7.3.2. Capacity IO Check

This allows the user to set the battery capacity level at which the test terminates.

7.3.3. Reset Battery Data and Setting to Defaults

This allows the user to reset the BTRM test parameters.

7.4. Port Options Page

This allows the user to enable the IO channels and the system operation voltage.



System Status	<p>BTRM IO Options</p> <div style="border: 1px dashed gray; padding: 5px;"> <p>IO Channel 1</p> <p><input checked="" type="radio"/> Analog Input 0 - 32V</p> <p><input type="radio"/> Digital Input Alarm if < 1V</p> <p><input type="radio"/> Digital Input Alarm if > 2V</p> <p>Low Capacity Alarm</p> <p><input type="radio"/> Digital Out Normally Open</p> <p><input type="radio"/> Digital Out Normally Low</p> </div> <div style="border: 1px dashed gray; padding: 5px; margin-top: 10px;"> <p>IO Channel 2</p> <p><input checked="" type="radio"/> Analog Input 0 - 32V</p> <p><input type="radio"/> Digital Input Alarm if < 1V</p> <p><input type="radio"/> Digital Input Alarm if > 2V</p> </div> <p>System Voltage</p> <div style="border: 1px dashed gray; padding: 5px; margin-top: 10px;"> <p><input checked="" type="radio"/> 12V System</p> <p><input type="radio"/> 24V System</p> </div> <p>Low Voltage Load Disconnect</p> <div style="border: 1px dashed gray; padding: 5px; margin-top: 10px;"> <p><input type="checkbox"/> Enable</p> <p>Shutdown 10.5V/21.0V</p> <p>Recover 12.5V/24.5V</p> </div> <p style="text-align: center; margin-top: 10px;"><input type="button" value="Save"/></p>
Battery Status	
Battery Test	
Manual Test	
Port Options	
E-Mail Configuration	
E-mail Test	
Network Configuration	
DNP3 Modbus Configuration	
SNMP Configuration	
SNMP MIB File	
Help	
About	

7.4.1. IO Channel 1

7.4.1.1. Analog Input 0-32V

This allows the user to enable an analog input level for triggering alarms from external sources (door switches, solid state relays, etc.).

7.4.1.2. Digital Input Alarm if < 1V

This allows the user to enable a digital input logic levels that is less than 1 volt to trigger an alarm from external sources (door switches, solid state relays, etc.).

7.4.1.3. Digital Input Alarm if > 2V

This allows the user to enable a digital input logic levels that is greater than 2 volt to trigger an alarm from external sources (door switches, solid state relays, etc.).

7.4.1.4. Low Capacity Alarm

This allows the user to enable the channel relay to indicate a battery relate fault

Digital Out Normally Open The relay closes when a fault is indicated.

Digital Out Normally Low The relay opens when a fault is indicated.

7.4.2. IO Channel 2

7.4.2.1. Analog Input 0-32V

This allows the user to enable an analog input level for triggering alarms from external sources (door switches, solid state relays, etc.).

7.4.2.2. Digital Input Alarm if < 1V

This allows the user to enable a digital input logic levels that is less than 1 volt to trigger an alarm from external sources (door switches, solid state relays, etc.).

7.4.2.3. Digital Input Alarm if > 2V

This allows the user to enable a digital input logic levels that is greater than 2 volt to trigger an alarm from external sources (door switches, solid state relays, etc.).

7.4.3. System Voltage

Allows the user to select whether the system operates at 12 V or 24 V.

7.5. Email Configuration Page

This page allows the user to configure information needed for the BTRM to access an email server and deliver messages to the destination email address along with two customizable text strings to provide additional situation detail in the email alert.



BTRM200

System Status	<h2 style="margin: 0;">Email Configuration</h2> <p>This page allows the configuration of the UPS Email settings.</p> <p>Note: Fields are currently limited to 22 characters with 32 for Email Addr</p> <ul style="list-style-type: none"> Contact: "Who to Contact in an Alarm Condition" Location: "The Location of the UPS" SMTP Server: Typically in the form "xxx.xxx.com" To: Typically in the form "xxx@xxx.com" <p>Enter the settings below:</p> <div style="border: 1px dashed gray; padding: 10px; margin: 10px 0;"> <p>Contact: <input type="text" value="BTRM contact"/></p> <p>Location: <input type="text" value="BTRM location"/></p> <p>Port: <input type="text" value="25"/></p> <p>User name: <input type="text"/></p> <p>Password: <input type="password"/></p> <p>Server Addr: <input type="text" value="smtp.xxx.com"/></p> <p>Email Addr: <input type="text" value="email@xxx.com"/></p> <p style="text-align: center;"><input type="button" value="Save"/></p> </div>
Battery Status	
Battery Test	
Manual Test	
Port Options	
E-Mail Configuration	
E-mail Test	
Network Configuration	
DNP3 Modbus Configuration	
SNMP Configuration	
SNMP MIB File	
Help	
About	

7.5.1. Contact and Location

While these text strings that are included with outgoing email and SNMP notifications to aid in identifying the site location and manager, they can be used for any purpose.

Contact: Enter the name of the contact person responsible for the site.

Location: Enter a short description of the site location the BTRM is monitoring

The following information should be obtained from your Network Administrator to setup the SMTP server.

7.5.2. Port

Enter the Port number the SMTP server uses, select SSL if it uses Secure Socket Layer. Normally this port is 25. For secure servers other port numbers are typically used such as Secure SMTP (SSMTP) - port 465 and Secure IMAP (IMAP4-SSL) - port 585.

7.5.3. User name and Password

If you are using your dedicated IP provider's internet service and its email server you will likely leave these two items blank. If you are on a public network, most likely you will need to access a secure server using SSL. In this case the user name and password will likely be required.

7.5.4. Server Address

This is the IP address or IP name of your outgoing email server. For example Gmail's server is *smtp.gmail.com*

7.5.5. Destination Email Address

The BTRM will send the email notifications to this email address.

7.6. Email Test Page

Use this page to send a test email using the setting from the previous page.

If successful after several seconds, the web page will update to indicate that the message has been successfully sent. If the page does not refresh after a minute, then likely the message was not sent. Check you setting, and or try these setting using a laptop and its email client to verify the connection and settings.



BTRM200

System Status	<h3>Send E-Mail Test</h3> <ul style="list-style-type: none"> • SMTP Server: Typically in the form "xxx.xxx.com" • To: Typically in the form "xxx@xxx.com" • User: Your Email Account • Message: Your Email Password <p>(Note Your SMTP server may not require a server name or password.)</p> <p>(Note SLL currently not implemented.)</p> <div style="border: 1px dashed gray; padding: 10px; margin-top: 20px;"> <p>SMTP Server: <input type="text" value="smtp.xxx.com"/></p> <p>Port: <input type="text" value="25"/></p> <p>User Name: <input type="text"/></p> <p>Password: <input type="password"/></p> <p>To: <input type="text" value="email@xxx.com"/></p> <p>Subject: <input type="text" value="BTRM location"/></p> <p>Message: <input type="text" value="BTRM contact"/></p> <p style="text-align: center;"><input type="button" value="Send Test Message"/></p> </div>
Battery Status	
Battery Test	
Manual Test	
Port Options	
E-Mail Configuration	
E-mail Test	
Network Configuration	
DNP3 Modbus Configuration	
SNMP Configuration	
SNMP MIB File	
Help	
About	

7.7. Network Configuration Page

This screen allows you to configure the Network settings on the BTRM. **DO NOT** change any of the settings here unless you know what you are doing. These settings should be configured under the direction of your network administrator.

Multiple BTRM’s could be active in the network at the same time. Each will have its own IP address to allow for remote access and monitoring.

To access any BTRM in the network, open a web browser and type the IP address of the BTRM into the address bar. Each BTRM should have their own unique address when they are part of the same network.



System Status
Battery Status
Battery Test
Manual Test
Port Options
E-Mail Configuration
E-mail Test
Network Configuration
DNP3 Modbus Configuration
SNMP Configuration
SNMP MIB File
Help
About

Board Configuration

This page allows the configuration of the board's network settings.

CAUTION: Incorrect settings may cause the board to lose network connectivity. Recovery options will be provided on the next page.

Enter the new settings for the board below:

MAC Address:	<input type="text" value="00:04:A3:B5:5A:25"/>
Host Name:	<input type="text" value="BTRM215"/>
IP Address:	<input type="text" value="192.168.1.215"/>
Gateway:	<input type="text" value="192.168.1.1"/>
Subnet Mask:	<input type="text" value="255.255.255.0"/>
Primary DNS:	<input type="text" value="192.168.1.1"/>
Secondary DNS:	<input type="text" value="0.0.0.0"/>
	<input type="button" value="Save Config"/>

7.7.1. Host Name

This name can be used in place of the IP address to get access to the BTRM.

7.7.2. IP address, Gateway, Subnet Mask

Enter the settings to match your network system.

7.8. DNP3 and Modbus

Selection and setup of DNP3 and Modbus Master and BTRM Device addresses and communications protocol selection.



BTRM200

System Status	<h3 style="margin: 0;">BTRM Protocol Options</h3> <div style="border: 1px dashed gray; padding: 5px; margin-bottom: 10px;"> <input type="radio"/> None <input checked="" type="radio"/> DNP3 <input type="radio"/> Modbus </div> <div style="border: 1px dashed gray; padding: 5px; margin-bottom: 10px;"> <h4 style="margin: 0;">Addressing</h4> <p>Device Address: <input style="width: 150px;" type="text" value="4"/></p> <p>Master Address: <input style="width: 150px;" type="text" value="3"/></p> <p>DNP3 Retry Sec: <input style="width: 150px;" type="text" value="10"/> <small>(0 to 255)</small></p> <p>DNP3 Retries: <input style="width: 150px;" type="text" value="5"/> <small>(0 to 254, 255 continuous)</small></p> </div> <div style="border: 1px dashed gray; padding: 5px;"> <h4 style="margin: 0;">IO Configuration</h4> <p><input type="radio"/> RS232 Serial Baud <input style="border: none; border-bottom: 1px solid gray;" type="text" value="9600"/></p> <p><input checked="" type="radio"/> TCP/IP</p> <p>Master IP Address: <input style="width: 150px;" type="text" value="192.168.1.2"/></p> <p>TCP/IP Port: <input style="width: 50px;" type="text" value="20000"/></p> </div> <p style="text-align: center; margin-top: 10px;"><input type="button" value="Save"/></p>
Battery Status	
Battery Test	
Manual Test	
Port Options	
E-Mail Configuration	
E-mail Test	
Network Configuration	
DNP3 Modbus Configuration	
SNMP Configuration	
SNMP MIB File	
Help	
About	

7.8.1. Addressing

Master and Device addressing supports values between 0 and 65535. Confirm with your selected protocol what address values are allowable.

7.8.2. DNP Retry Settings

Retry settings for unsolicited messages range between 0 (no retries) and 254 with setting of 255 causing continuous retries. Elapsed time between retries 0 to 255 seconds (settings below 5 seconds not recommended).

7.8.3. Communications Interface

7.8.3.1. TCP/IP

Configurable :TCP/IP Port (Default 20000)

Configurable: TCP/IP Unsolicited message destination IP address

7.8.3.2. RS232

BTRM supports a 3 wire RS232 using standard connections on DB9 connector.

Baud Rates: Selectable 9600, 19200

Format: Data 8 bits, No Parity, Stop Bits 1

7.9. SNMP Configuration Page

Setting the community strings provides SNMP with basic password protection. User has a choice of 3 read only and 3 write only strings. Most SNMP browsers are configured to use the typical default strings, public, read, or write. When a string is changed read or write, the software used to connect to the BTRM must also use the same strings for read write access. If you wish to use SNMP alerts the Read and Write strings will need to be configured to match your network. These settings should only be changed by a Network Administrator or by someone who understands the proper settings for your network.

Leaving a field blank will disable it.



- System Status
- Battery Status
- Battery Test
- Manual Test
- Port Options
- E-Mail Configuration
- E-mail Test
- Network Configuration
- DNP3 Modbus Configuration
- SNMP Configuration**
- SNMP MIB File
- Help
- About

BTRM SNMP Community Configuration

Read/Write Community String configuration for SNMPv2c Agent.

Configure multiple community names if you want the SNMP agent to respond to the NMS/SNMP manager with different read and write community names. If less than three communities are needed, leave extra fields blank to disable them.

Note: Community String are limited to 15 characters

Read Comm1 :	<input type="text" value="public"/>
Read Comm2 :	<input type="text" value="read"/>
Read Comm3 :	<input type="text"/>
Write Comm1:	<input type="text" value="private"/>
Write Comm2:	<input type="text" value="write"/>
Write Comm3:	<input type="text" value="public"/>
<input type="button" value="Save Config"/>	

NOTE: SNMP configurations may be confusing. Please consult your Network Administrator to assist you in the SNMP configuration and setup.

7.10. SNMP MIB File Page

The BTRM is provided with a Management Information Base File (a text file ending in “.mib”). This file allows a MIB browser to translate the numeric OID numbers into text descriptions. This can be down loaded in the MIB browser from the BTRM firmware using this webpage.

The screenshot shows the BTRM200 web interface. On the left is a navigation menu with the following items: System Status, Battery Status, Battery Test, Manual Test, Port Options, E-Mail Configuration, E-mail Test, Network Configuration, DNP3 Modbus Configuration, SNMP Configuration, **SNMP MIB File** (highlighted in red), Help, and About. The main content area is titled "BTRM SNMP Community Configuration" and contains the following text: "Read/Write Community String configuration for SNMPv2c Agent. Configure multiple community names if you want the SNMP agent to respond to the NMS/SNMP manager with different read and write community names. If less than three communities are needed, leave extra fields blank to disable them." Below this text is a "Note: Commu" and a table with columns for "Read" and "Write" community strings. A dialog box titled "Opening btrm2_mib_2012-07-17.zip" is overlaid on the page, showing the file name, its source URL (http://24.85.247.184:8800), and options for how to handle the file: "Open with WinRAR archiver (default)", "Save File" (selected), and "Do this automatically for files like this from now on." (unchecked). The dialog box has "OK" and "Cancel" buttons.

7.11. Help Page

This page provides the user default IP and SNMP notification setup information.



BTRM200

System Status
Battery Status
Battery Test
Manual Test
Port Options
E-Mail Configuration
E-mail Test
Network Configuration
DNP3 Modbus Configuration
SNMP Configuration
SNMP MIB File
Help
About

Help

Default UPS IP Addressing

To reset to Default IP:

Hold Button PB1 15 to 20 seconds - LEDs will flash when reset complete

- **Unit IP: 192.168.1.214**
- **Gateway: 192.168.1.1**
- **Subnet: 255.255.255.0**
- **Primary DNS: 192.168.1.1**

Battery Test

To reset Default Battery settings:

Hold Button PB2 15 to 20 seconds - LEDs will flash when reset complete

IO channels The two IO1 and IO2 channels are multipurpose.

They can be set as analog voltage monitors, alarm on digital input detection, or alarm out based on battery status.

- Analog Voltage Range 0 to 32 volts

This feature remains active in both digital modes

- digital input

- digital output

Note: SNMP and Email messages are not sent if digital alarm state changes are detected in the first 10 seconds. This prevents unwanted alarm notifications (from a channel is in alarm state) every time the power is cycled.

SNMP Notification Setup

To setup SNMP Notification destination IP addresses: use an SNMP Browser like the one from

<http://www.ireasoning.com/>

- then enable trapEnable.0 or trapEnable.1 by setting them to "1"

- then set the corresponding trapReceiverIP Address 1 or 2 in standard dotted notation eg: "192.168.1.100"

7.12. About

This page provides the user with web page and firmware revision information.



BTRM200	
System Status	<h2 style="margin: 0;">About</h2> <p>BTRM Web Version: April 25 2013 BTRM Frimware Version: v1.30D Build Date: May 10 2013 10:22:53</p>
Battery Status	
Battery Test	
Manual Test	
Port Options	
E-Mail Configuration	
E-mail Test	
Network Configuration	
DNP3 Modbus Configuration	
SNMP Configuration	
SNMP MIB File	
Help	
About	

8. SNMP Functionality

8.1. Network SNMP Monitoring

Simple Network Management Protocol (SNMP), used by most Network Operations Centers (NOC), is a protocol that allows the NOC to retrieve parameters, set parameters, and receive Alert Notifications from Ethernet connected appliances through a common interface and language. Each network appliance feature, that can be read or written to, will have a numeric string assigned to it. For example system description (sysDesc) is .1.3.6.1.2.1.1.1.0.

For Network SNMP functionality, consult your network administrator for SNMP setup and configuration parameters and how the BTRM should be configured for your specific SNMP requirements and trap receivers.

8.2. SNMP Monitoring through a MIB Browser

In order to accept SNMP messages being sent from the BTRM you will need to have an SNMP monitoring system in your network or a MIB browser loaded onto your laptop.

A MIB browser can be used to capture SNMP traps in place of a network SNMP trap receiver. The MIB Browser can be loaded onto a PC or Laptop for monitoring of BTRM SNMP Traps. The MIB browser will need to be on the same network as the BTRM in order to receive the messages.

SNMP network access can be had from interfaces as simple as a command line interface available in Windows, Linux, and other operating systems, or using a dedicated software browser like the one shown below from iReasoning, available at www.iReasoning.com, to larger packages such as HP Openview designed to support and manage larger networks.

IMPORTANT: Once the MIB Browser is loaded you will need to load the BTRM MIB file. You can download the BTRM MIB file from the BTRM via the SNMP MIB file page on you web browser.

8.2.1. Install MIB Browser

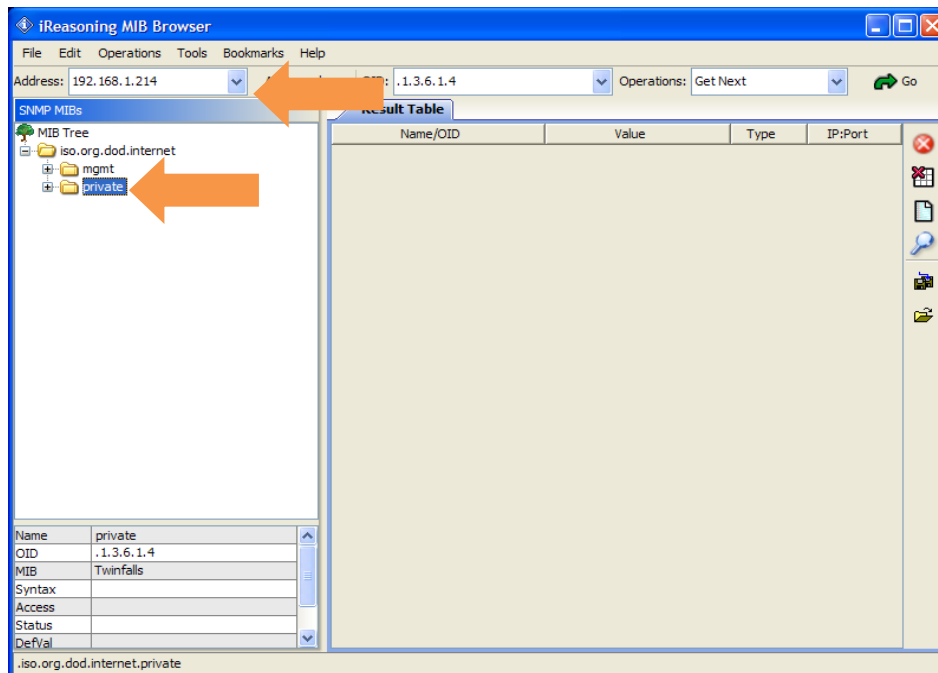
1. Download MIB Browser from <http://www.ireasoning.com>.
2. Open MIB Browser Folder.
3. Click on the Setup.exe file.
4. Click Run and Follow the installation instructions.
5. Click Close when the installation has completed.
6. Launch the MIB Browser.

8.2.2. Install SNMP MIB File

1. In the MIB Browser – Click on the File Tab.
2. Select Load MIBs.
3. In the Open Window, locate the file called btrm2_mib_YYYY-MM-DD.mib (This traps file should be located in the software files included with your BTRM).
4. Click on the btrm2_mib_YYYY-MM-DD.mib.
5. Click Open.

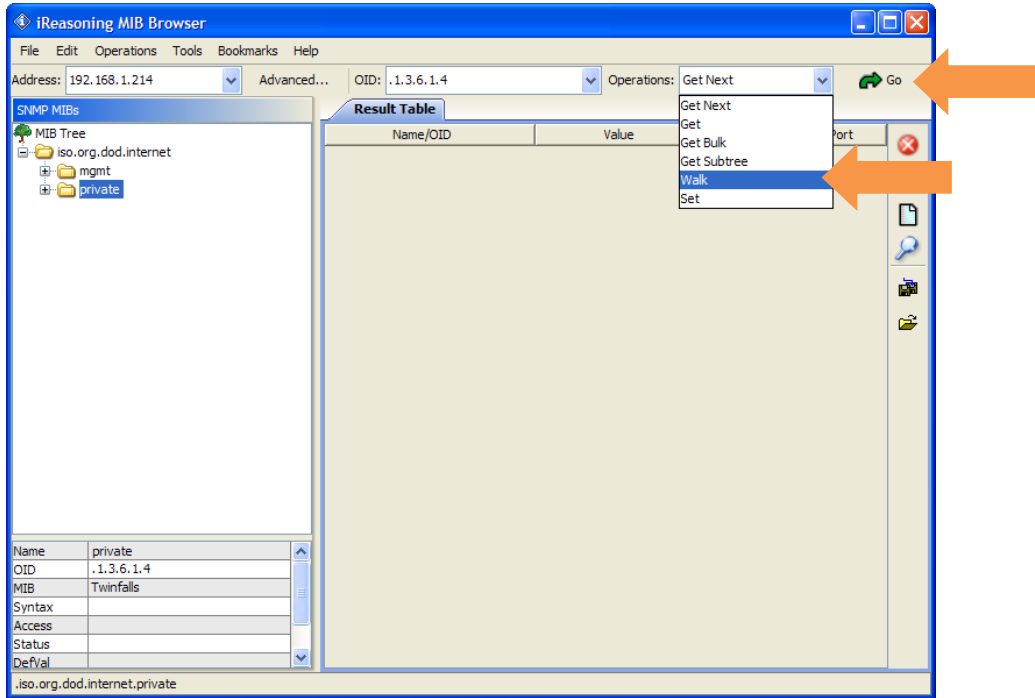
8.2.3. View BTRM via MIB Browser

1. Once the MIB browser is loaded, click on the desktop icon to launch it. You will see the main screen that should look similar to the one below. In the Address field type in the IP address of the BTRM, 192.168.1.214. Expand the folders on the left menu and highlight private.

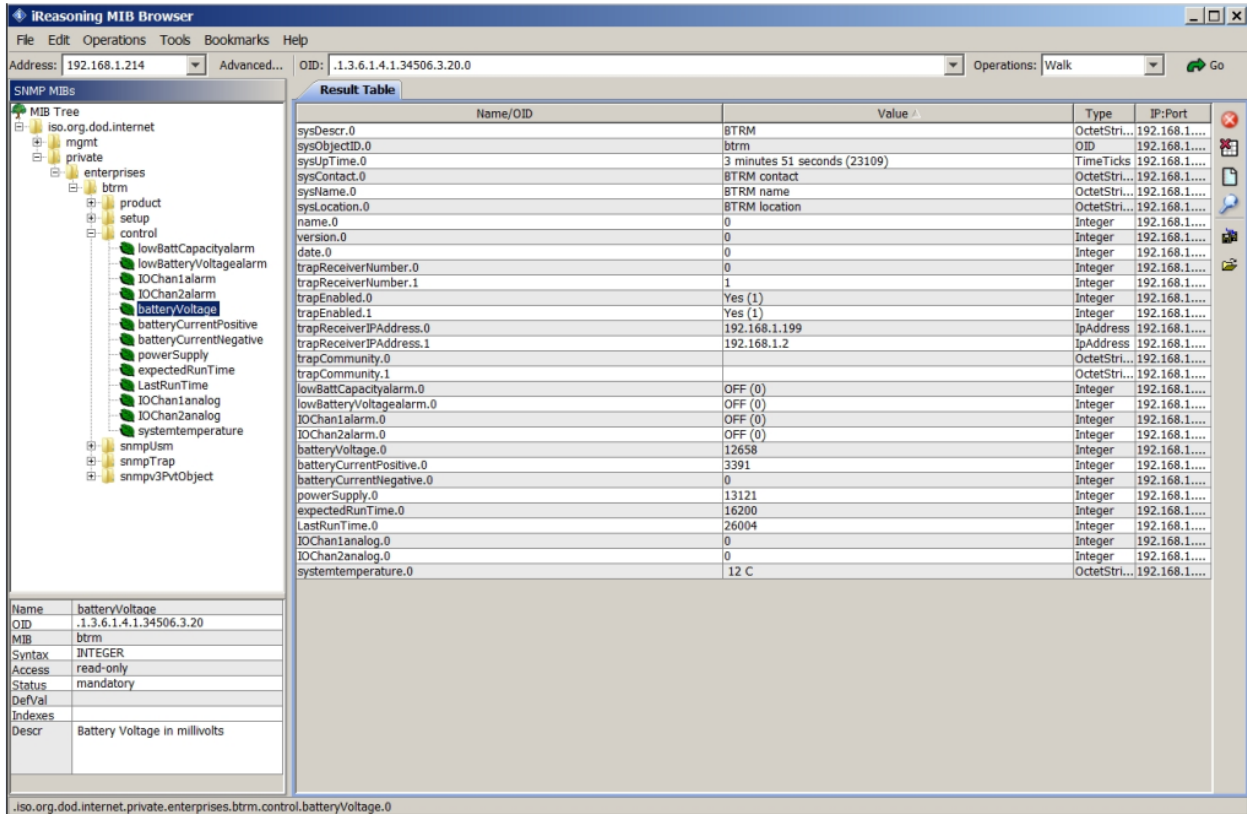


2. If you have changed the community strings from the default values, use the advanced menu item to update the browsers read write community strings to match the BTRM.

3. From the operations pull down menu, select “Walk” and click Go.



4. You should see data results begin to fill up in the main window Results Tab.



8.2.4. Configure Trap Receiver

In order to receive SNMP Traps (alert messages) you will need to setup your MIB browser to receive them. This means you need to setup your TrapReceiver so that the BTRM knows where to send the traps. So in the next you will setup the TrapReceiver IP address. (You will set this to the IP address of your laptop that you recorded earlier).

1. In the Results Table locate the line that says trapReceiverAddress.0 , right click on the line and select “set”.

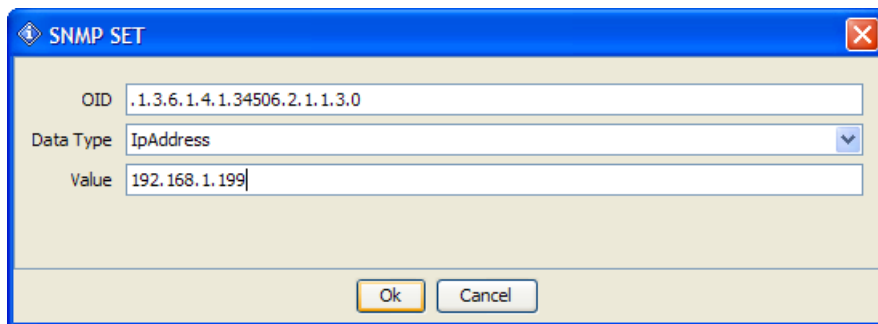
The screenshot shows the iReasoning MIB Browser interface. On the left, the MIB Tree is expanded to show the path: iso.org.dod.internet > private > enterprises > btrm > control > batteryVoltage. An orange arrow points from this entry to the 'batteryVoltage' row in the Result Table. The Result Table lists various MIB objects, and the 'trapReceiverAddress.0' row is selected. A context menu is open over this row, with the 'Set' option highlighted by another orange arrow. Below the table, a detailed view for 'batteryVoltage' is shown, including its Name, OID, MIB, Syntax, Access, Status, DefVal, and Description.

Name/OID	Value	Type	IP:Port
sysDescr.0	BTRM	OctetStri...	192.168.1....
sysObjectID.0	btrm	OID	192.168.1....
sysUpTime.0	3 minutes 51 seconds (23109)	TimeTicks	192.168.1....
sysContact.0	BTRM contact	OctetStri...	192.168.1....
sysName.0	BTRM name	OctetStri...	192.168.1....
sysLocation.0	BTRM location	OctetStri...	192.168.1....
name.0	0	Integer	192.168.1....
version.0	0	Integer	192.168.1....
date.0	0	Integer	192.168.1....
trapReceiverNumber.0	0	Integer	192.168.1....
trapReceiverNumber.1	1	Integer	192.168.1....
trapEnabled.0	1	Integer	192.168.1....
trapEnabled.1	1	Integer	192.168.1....
trapReceiverIPAddress.0	192.168.1.1	IPAddress	192.168.1....
trapReceiverIPAddress.1	192.168.1.1	IPAddress	192.168.1....
trapCommunity.0	public	OctetStri...	192.168.1....
trapCommunity.1	public	OctetStri...	192.168.1....
lowBattCapacityalarm.0	0	Integer	192.168.1....
lowBattCapacityalarm.1	0	Integer	192.168.1....
lowBatteryVoltagealarm.0	0	Integer	192.168.1....
lowBatteryVoltagealarm.1	0	Integer	192.168.1....
IOChan1alarm.0	0	Integer	192.168.1....
IOChan1alarm.1	0	Integer	192.168.1....
IOChan2alarm.0	0	Integer	192.168.1....
IOChan2alarm.1	0	Integer	192.168.1....
batteryVoltage.0	12658	Integer	192.168.1....
batteryCurrentPositive.0	3391	Integer	192.168.1....
batteryCurrentNegative.0	0	Integer	192.168.1....
powerSupply.0	13121	Integer	192.168.1....
expectedRunTime.0	16200	Integer	192.168.1....
LastRunTime.0	26004	Integer	192.168.1....
IOChan1analog.0	0	Integer	192.168.1....
IOChan2analog.0	0	Integer	192.168.1....
systemtemperature.0	12 C	OctetStri...	192.168.1....

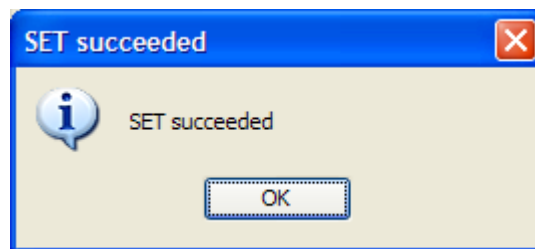
Name	batteryVoltage
OID	.1.3.6.1.4.1.34506.3.20
MIB	btrm
Syntax	INTEGER
Access	read-only
Status	mandatory
DefVal	
Indexes	
Descr	Battery Voltage in millivolts

iso.org.dod.internet.private.enterprises.btrm.control.batteryVoltage.0

2. Enter the IP Address of your PC or Laptop in the Value field and click OK.
Note: In order to receive SNMP messages the BTRM and the associated PC or Laptop must be on the same network or be able to communicate across networks. Verify connectivity by pinging the BTRM with your PC or laptop. If you receive a reply you should be able to receive SNMP messages.

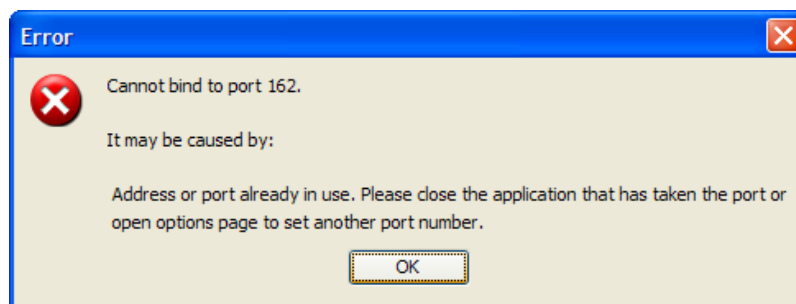


3. If your entry was successful you will see a SET succeeded window.



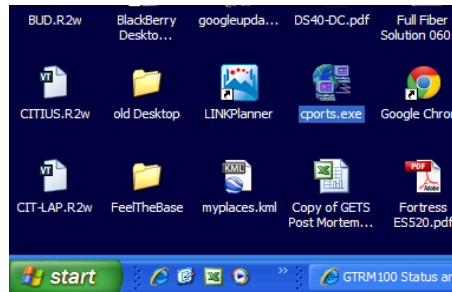
8.2.5. Cannot Bind to Port 162 Error Message

Depending on your computer configuration you may get an error message pop up that says that you cannot bind to port 162. SNMP uses port 162 and sometimes Windows has an active SNMP server running that is using port 162. If you get this message you will need to follow the steps below to kill the process using the port.

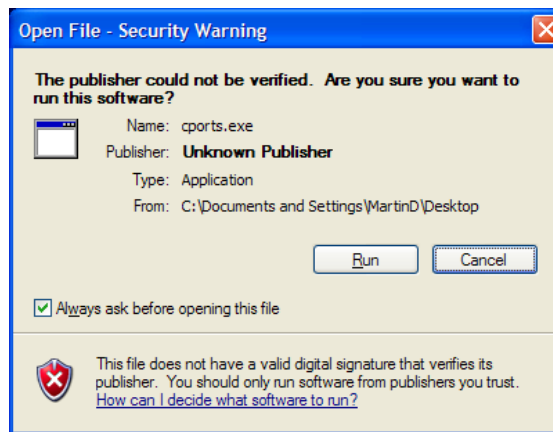


Steps to shut down Application binding to Port 162

1. Load CurrPorts software – Download CurrPorts software from <http://download.cnet.com/CurrPorts>.
2. Click on the cports.exe icon to launch the software

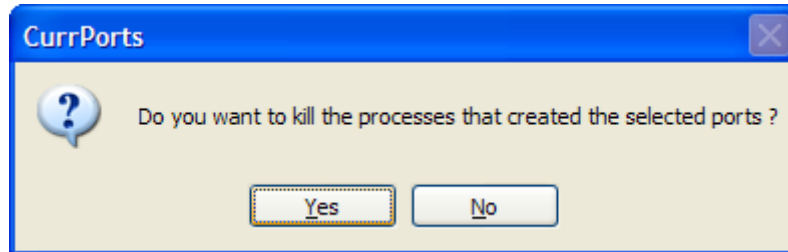


3. When the software opens click Run.



4. Locate the application that is using port 162 by finding it under the Local Port column. Click on the line to highlight it.

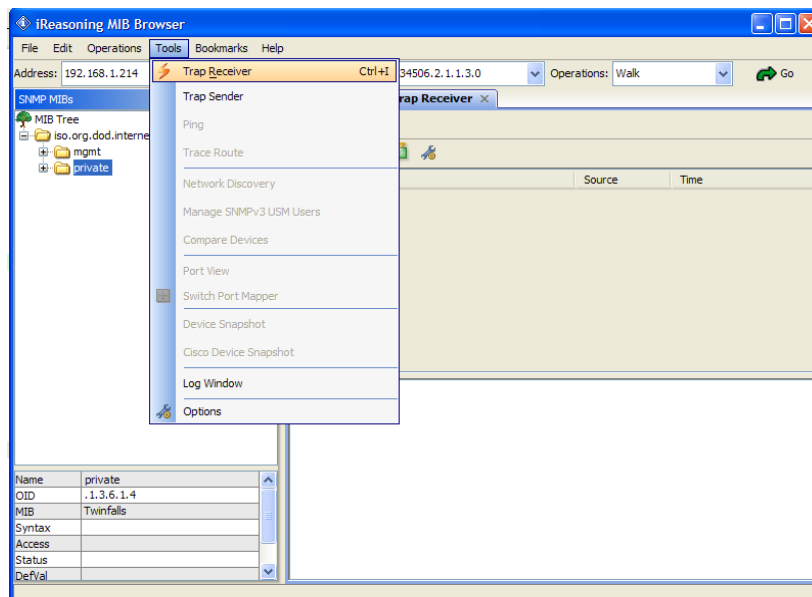
6. Select Yes on the window that asks if you want to kill the process.



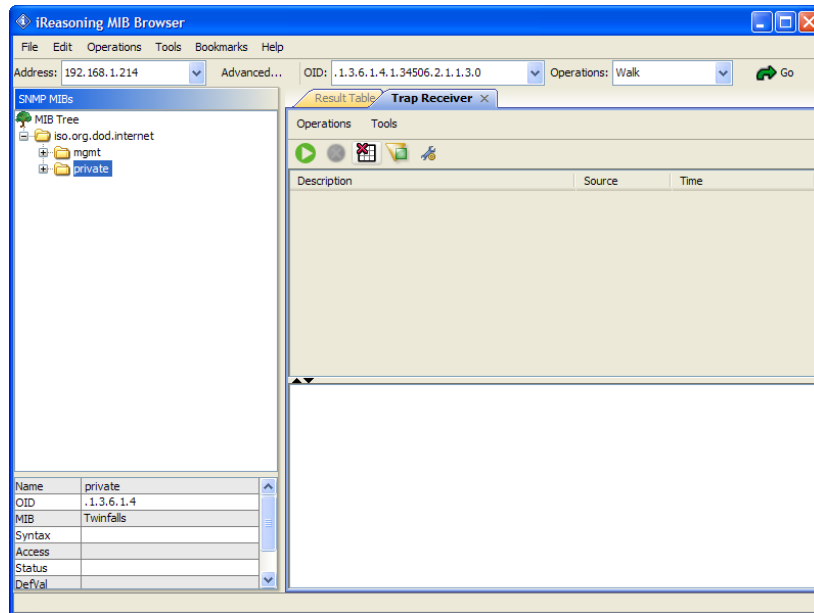
7. You should now be able to return to the MIB browser and continue to open the Trap Receiver.

8.2.6. Open Trap Receiver

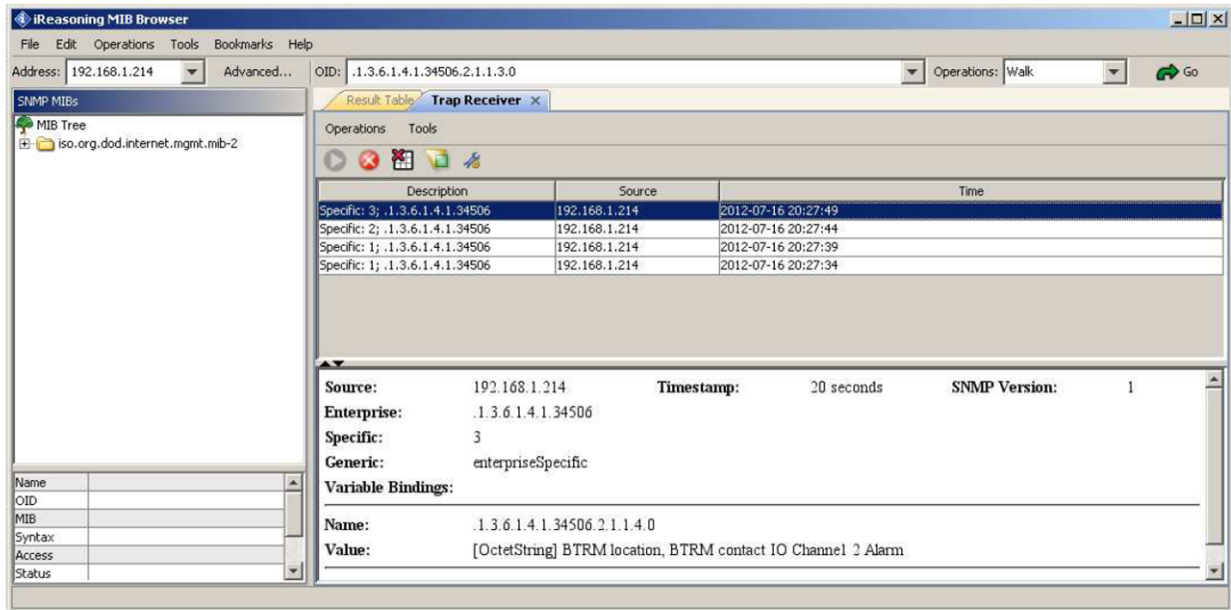
1. In order to see the SNMP alert messages coming in you will need to open the trap receiver Tab. To do this, in the MIB Browser, go to Tools and select Trap Receiver.



2. You should now see a Trap Receiver Tab in the main window of the MIB Browser.



3. Now, in order to see the SNMP traps coming in you need to throw the BTRM into an alarm by removing one contact loop circuit at a time. There are various ways to break the contact loop circuit depending on the BTRM configuration.
 - a. Door Switch
 - i. Push the door switch in and hold for approximately 10 seconds. This simulates the enclosure door being closure.
 - ii. Release the door switch.
 - iii. In a few seconds you should see an SNMP message alert come into the trap receiver in the MIB Browser.
 - b. AC/DC OK Indication
 - i. When you remove the AC power from the enclosure, you should see an alarm on the BTRM.



ALSO NOTE: The software alarms in the BTRM user interface and the SNMP alert messages, the BTRM is also sending out email message alerts to the email address that you configured in the email setup section.

Screenshot of the System Status Screen showing alarm on IO Channel 1. The Digital In “TRUE” logic level indicates that the voltage thrush hold for the port has been met. An alarm message has been sent.

System Status

BTRM200

System

●

Status

Battery Voltage	13.60
Battery Current	0.8
Supply Voltage	14.11
System Temp	28 °C
Capacity	NA

IO Channel 1

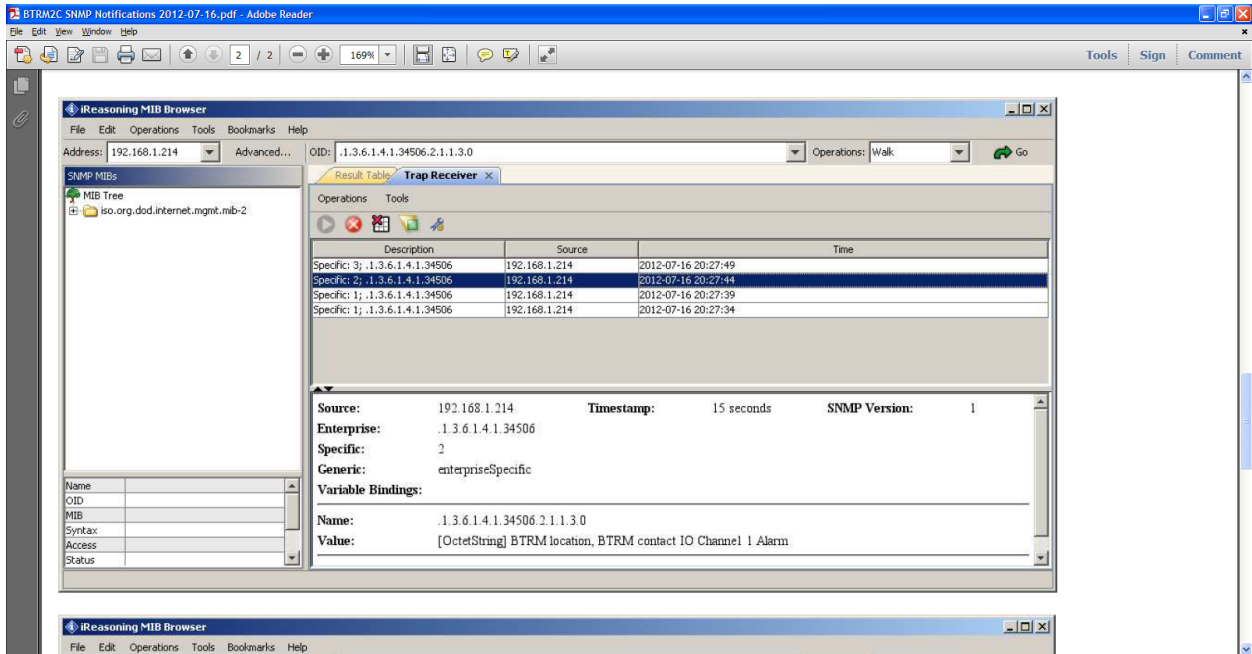
Analog V	13.9
Digital In	TRUE
Digital Out	OFF

IO Channel 2

Analog V	13.9
Digital In	FALSE

System Voltage Type: 12V
System Up Time: 0 Days 00:20
Test Status: OFF

Screenshot of SNMP Messages showing alarm on IO Channel 1. If you click on the SNMP messages you can read the detailed description including timestamp and location the message was sent from.



8.3. Further Reading

Douglas Mauro, Kevin Schmidt. *Essential SNMP*, Second Edition. O'Reilly Media, Inc.

9. Additional Protocols

9.1. DNP3

9.1.1. Overview

9.1.2. Data Link Layer

BTRM2 DNPV2.0 Currently no support for data link layer commands

9.1.3. Application Layer

9.1.3.1. Function Support

Dec	Hex	Function
0	0	Confirm
1	1	Read
2	2	Write

5	5	Direct Operate
13	D	Cold Restart
15	F	Initialize Data
20	14	Enable Unsolicited
21	15	Disable Unsolicited
129	81	Response
130	82	Unsolicited Response

9.1.3.1.1. Enable Disable Unsolicited Event Status

BTRM allows enable and disable of unsolicited events. Status can be read from Binary Point 3

9.1.3.2. Groups and Variations

Object /Group	Object /Group	Type	Variation	Description
01	Binary Input Status	Static	02	1 byte input status with flag
30	Analog Input Status	Static	04	16 bits without flag
10	Binary Output Status	Static	02	1 byte output status with flag
10	Binary Output Write	Static	01	Write using q00 start = stop
40	Analog Output Status	Static	02	16 bits with flag
41	Analog Output	Static	02	16 bits with flag 0x01
60	Class 1 Static Data	Static	01	Class 1 Data
60	Class 2 Event Data	Static	02	Class 2 Data

9.1.3.3. Qualifiers

Qualifiers (Hex)	Used In a request	Range	Index
00	a range of points or single point	8 bits	8 bits
06	all points range and index 8 bits	8 bits	8 bits
17	list of unrelated points	8 bits	8 bits

9.1.3.4. Binary Input Status Points

Point	Description	State	Value
0	Low Battery Capacity	Low	0x81
1	Low Battery Voltage	Low	0x81
2	DNP3 Unsolicited Enabled	Enabled	0x81
3	Aux IO Channel 1 Digital In	Tripped	0x81
4	Aux IO Channel 2 Digital In	Tripped	0x81
5	Any Fault Flag	Tripped	0x81

9.1.3.5. Analog Input Status Points

Point	Description	Units	
0	Battery Voltage	millivolts	0 to 3200 mv
1	Charger Voltage	millivolts	0 to 3200 mv
2	Battery Current	±milliamps	± 32000 ma
3	Temperature	±°C	
4	Battery Minimum Runtime	Minutes	0 to 3200 minutes
5	Battery Runtime Estimate	Hours	
6	Battery Test Temperature	±°C	
7	Battery Test Schedule Time	Hours	0 to 500 Hrs
8	Battery Test Next Time	Hours	0 to 500Hrs
9	Aux IO Channel 1 Voltage	millivolts	0 to 3200 mv
10	Aux IO Channel 2 Voltage	millivolts	0 to 3200 mv
11	Firmware Version	format xx.xx	-> 130 = v1.30

9.1.3.6. Analog Output Status Points

Point	Description	State	
0	Battery Minimum Runtime	Minutes	0 to 3200 minutes
1	Battery Test Schedule Time	Hours	0 to 500Hrs
2	Battery Test Next Test Time	Hours	0 to 500Hrs
3	Aux IO Channel 1 Config	1,2,3	(see below)
4	Aux IO Channel 2 Config	1,2,3,4,5	(see below)
5	System Selection 12V /24V	1,2	1= 12v, 2 =24v

IO1	Function Control	Values 0,1,2,3,4
Read	Group 40 Variation 2	16bit Analog with flag
Direct Operate Direct Op Value	Group 41 Variation 2	16bit Analog with flag
	0 Analog	
	1 Digital Input Alarm if < 1v	
	2 Digital Input Alarm if > 2v Low Capacity Alarm	
	3 Digital Out NC	
	4 Digital Out NO	

IO2	Function Control	Values 0,1,2
Read	Group 40 Variation 2	16bit Analog with flag
Direct Operate Direct Op Value	Group 41 Variation 2	16bit Analog with flag
	0 Analog	
	1 Digital Input Alarm if < 1v	
	2 Digital Input Alarm if > 2v	

9.1.3.7. Binary Output Status Point

Point	Description	State	Value	State	Value
0	Battery Data Reset	Session has Data	0x81	Data Empty	0x01
1	Battery LVD Status	LVD is enabled	0x81	LVD disabled	0x01
2	Battery Test Enable	Test is enabled	0x81	Test is disabled	0x01
3	Battery Start Test	Test running	0x81	Test not running	0x01

9.1.3.8. Binary Output Write to Points

Binary output points can be written to directly using Group 10 variation 01, using Qualifier 0x00 (8 bit index and range).

Points must be written to individually, using matching start and stop values, followed by the binary value "1" or "0" (See DNP_ IEE-1815-2023 11.9.4.6)

To clear or enable write a "1", or to disable write a "0".

An xample to reset battery data, g10v01 q00 start 0 stop 0 value 1, would be to issue an application layer write command of the form:

c5 02 0a 01 00 00 00 01

Point	Description	State	Value	State	Value
0	Battery Data Reset	Write to Enable	0x81	Write to Disabled	0x01
1	Battery LV Disconnect Enable	Write to Clear	0x81	Cleared	0x01
2	Battery Test Enable	Write to Start	0x81	Write to Stop	0x01
3	Battery Start / Stop Test	Write to Start	0x81	Write to Stop	0x01

9.1.3.9. Events

When Events are generated, they are reported via unsolicited messaging (if enabled), or queue to the event list for reading when polling for Class 2 data, or reading Binary events. Event points correspond to Binary Input Points.

Point	Description	State	Value
1	Low Battery Capacity Event	Tripped Event	0x81
2	Low Battery Voltage Event	Tripped Event	0x81
4	Aux IO Channel 1 Event	Tripped Event	0x81
5	Aux IO Channel 2 Digital In	Tripped Event	0x82

9.1.3.10.

9.2. Mod Bus

- expected Q3/2013

10. Additional Network Setup

10.1. IP Reset

To reset the device to its default IP address settings, hold Button PB1 for 20 seconds. All the LEDs will flash and the unit will restart with the default IP settings listed on the device label.

Typically these settings are:

Unit IP	192.168.1.214
Subnet Mask	255.255.255.0
Gateway	192.168.1.1

10.2. Router Ports

If you need to access the device from outside of a local intranet (hosts computer is on the WAN side of the device router), the appropriate ports will need to be set on the router to which the host computer is attached and also the router to which the device is attached.

One solution

Routers allow a single device to be set so that it can be reached by using the router's IP address. The same can be done for the host computer, sometimes called –“placing the device in the demilitarized zone” (DMZ). Not as secure, but much simpler as ports do not need to be forwarded. In this case the device IP ↔ the Router WAN IP.

Opening Ports Method

When accessing the device from behind a router the device LAN IP address is effectively hidden. In this case the port number is used to determine the final destination.. Only the WAN IP address of the router is reachable. The host computer then uses the router WAN IP as the destination IP address.

The Router then uses the messages destination port, and the routers port forwarding table to direct to the appropriate device on the internal intranet.

For example:

Host Computer has internal LAN IP of 192.168.1.214
Its Router has WAN IP of 100.78.60.21

Device issues a SNMP notification to 100.78.60.21:162 (where 162 is the port number)

The Router is the message destination. The Router looks at the message’s port, checks its port forwarding table to see if the UDP port 162 is forwarded to a local LAN IP address. If so, delivers it to that IP address (in this case the Host Computer), otherwise the message is discarded.

10.3. Port Table

Function	Default Port Values	
	TCP/IP	UDP
Web Page Access (http)	80	
SNMP Management Access		161
SNMP Notifications		162
Email	21	
DNP3	20000	
Firmware Update		16384

11. Specifications and Warranty

Electrical Specifications

Operating Voltage	9 to 32 VDC
Battery Max Current	10 A Continuous
Charger Max Current	10 A Continuous
Load 1 & 2 Combined Max Current	10 A Continuous

Battery and Charger

Voltage Measurement	0 to 32V ± 1%
Current Measurement	0 to 10 Amps ± 1%

Environmental

Temperature	-20° C to +60° C
Humidity	5 % to 95% Non Condensing

Mechanical

Size	6.25” H X 2.8” D X 1.2” W
Weight	5.0 oz (142 g)
Mounting	Din rail mounting

Warranty	One Year
----------	----------

Note: Specifications subject to change without notice.