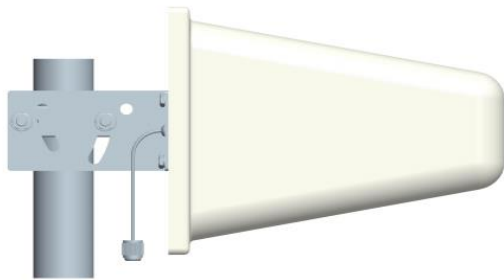


698-2700 MHz, Yagi Antenna, Enclosed 8.5 dBi, N-Female



- ❖ Broadband Yagi antenna covering 698-2700MHz
- ❖ Highly durable and rugged construction with Aluminum elements and weatherproof radome
- ❖ Applications in DAS, Utilities, Oil & Gas, Mining, Industrial, Transportation, Irrigation and many more
- ❖ Includes articulated mounting bracket and hardware
- ❖ Supports both Vertical or horizontal polarization

Connector Option	Product SKU	Ventev Part #
N Female	309584	M3075100Y11206-B

For more information or to purchase, contact Ventev:
800.851.4965 or sales@ventev.com.

Electrical Specifications			
Frequency Bands, MHz	698-800	800-960	1700-2700
Polarization		Linear	
Azimuth (HBW)	85°	85°	60°
Elevation (VBW)	65°	60°	50°
VSWR	≤1.5	≤1.5	≤1.8
Gain, dBi	7.5	8.5	10
Front-to-Back Ratio (dB)	≥15	≥15	≥20
Max Input Power per Port, watts		100	
Impedance, ohm		50	
Mechanical Specifications			
Product Dimensions	11.5 x 8.3 x 2.6 in		
Input Connector	1x N Female, 30" Pigtail		
Mounting	Pole/Mast Mount (1.5" to 2.0"); Hardware included.		
Operating Temperature	-40 to +70 °C		
Wind Survival	125 mph (200 kmph)		
Product Weight	2 lb		

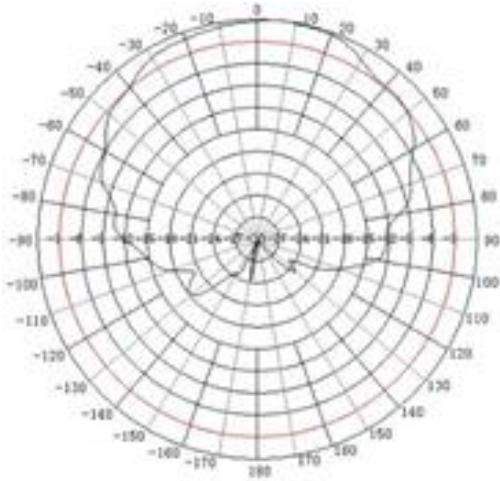
Note: Mast not included

Every Ventev antenna is RoHS compliant and covered by company's 2-year warranty program.

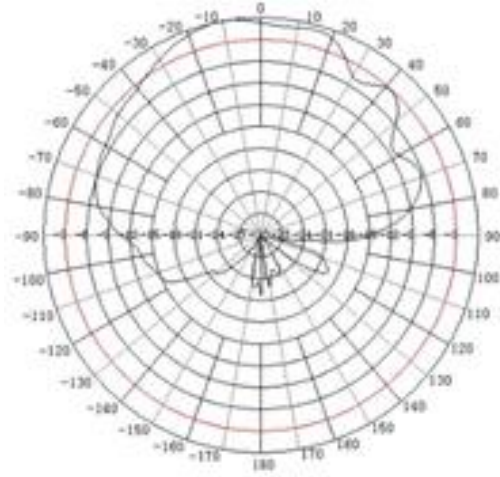
698-2700 MHz, Yagi Antenna, Enclosed 8.5 dBi, N-Female

Radiation Patterns

H Plane

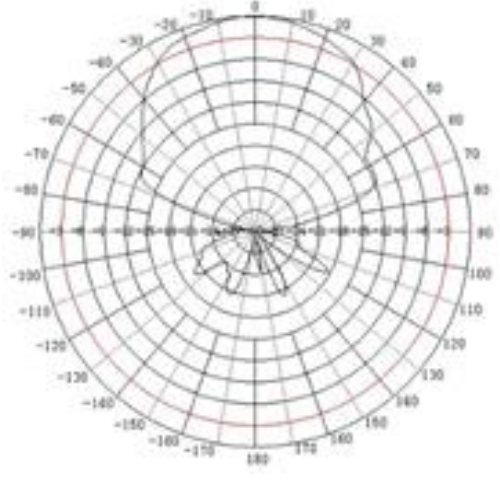


800 MHz

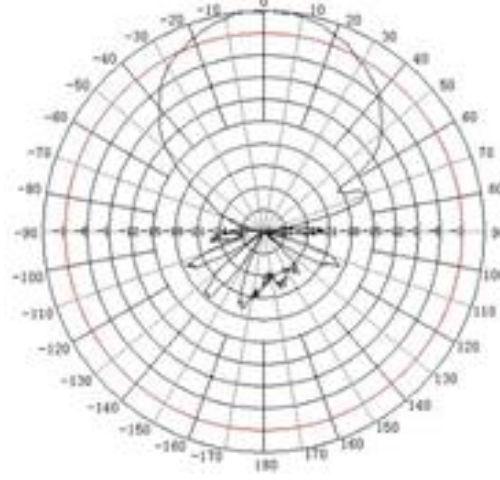


2000 MHz

E Plane



800 MHz



2000 MHz

MOUNT INFORMATION

- 1 - Mast
- 2 - Articulating Mast Mount
- 3 - Connector
- 4 - Antenna

